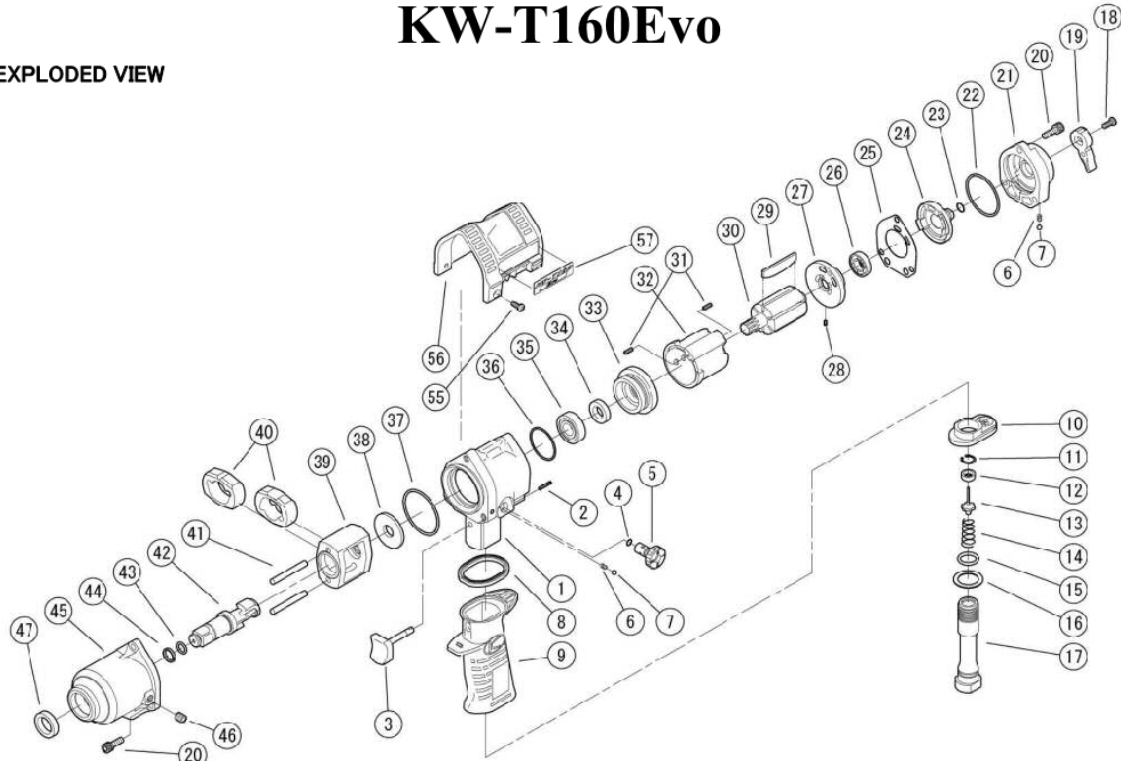


# KW-T160Evo

EXPLODED VIEW



REF. NO.	PART NO.	PART NAME	Q'TY	REF. NO.	PART NO.	PART NAME	Q'TY
1	09160010V	MOTOR CASE	1	30	09160210	ROTOR	1
2	Z05625X16	SPRING PIN	1	31	Z0563X8	SPRING PIN	2
3	0516012C	THROTTLE LEVER	1	32	051602001D	CYLINDER	1
4	Z041S6	O-RING	1	33	09160230	FRONT END PLATE	1
5	0516017B	REGULATING KNOB	1	34	Z01812215	OIL SEAL	1
6	0114194	KNOCK SPRING	2	35	Z0016001Z	BALL BEARING	1
7	Z0104D	STEEL BALL	2	36	Z041S32	O-RING	1
8	05160016B	GRIP GASKET	1	37	Z041S42	O-RING	1
9	05160011C	GRIP	1	38	09160250	SPACER	1
10	05160815B	GRIP END C.P.	1	39	0112X26	HAMMER CAGE	1
11	Z03012	STOP RING	1	40	0112X28	HAMMER	2
12	0516010B	THROTTLE VALVE SEAT	1	41	0112X29	HAMMER PIN	2
13	05160131BA	THROTTLE VALVE	1	42	0112X844	1/2" SQ. DR. ANVIL	1
14	0114190	THROTTLE VALVE SPRING	1	(42)	0112X845	1/2" SQ. DR. ANVIL (LONG)	1
15	Z040P14	O-RING	1	43	Z040P7	O-RING	1
16	0516075B	WASHER	1	44	0112X341	RETAINER RING	1
17	0516011C	INLET BUSHING ( PT )	1	45	0916082001	CLUTCH CASE C.P	1
(17)	0516011CN	INLET BUSHING ( NPT )	1	46	Z0751/16D	OIL PLUG	1
18	Z0704X10	TAPPING SCREW	1	47	Z01617245	OIL SEAL	1
19	0516016B	REVERSING LEVER	1				
20	Z0665X16A	BOLT	6	55	Z0804X10	TAPPING SCREW	2
21	05160881B	CASE COVER UNIT	1	56	09160041V	PROTECTOR (BLACK)	1
21	0516088B	CASE COVER C.P.	1	57	09160950V	MODEL LABEL	1
22	Z04340015	O-RING	1				
23	Z041S9	O-RING	1				
24	0516015B	REVERSING VALVE	1				
25	0516006B	MOTOR GASKET	1				
26	Z001EE3	BALL BEARING	1				
27	0516024B1	REAR END PLATE	1				
28	Z05625X8	SPRING PIN	1				
29	0108922A	ROTOR BLADE	6				