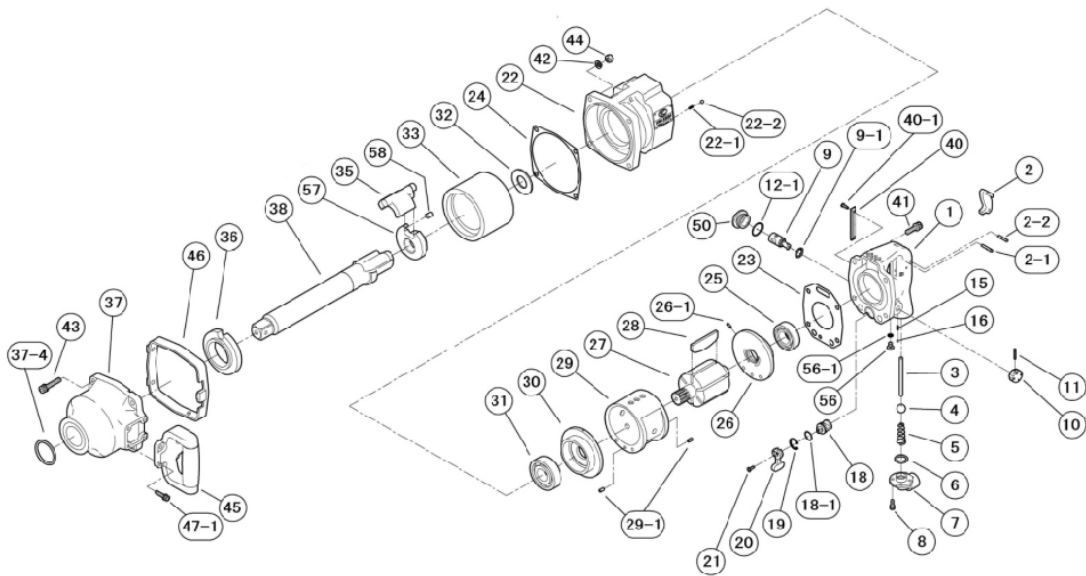


## EXPLODED VIEW

## KW-550H



REF. NO.	PART NO.	PART NAME	Q'TY	REF. NO.	PART NO.	PART NAME	Q'TY
1	0442380A1	HANDLE C.P.	1	29-1	Z0565X8	PIN	2
2	0132117D	THROTTLE LEVER	1	30	0442323A	FRONT END PLATE	1
2-1	Z0614X26	PIN	1	31	Z0016305	FRONT BEARING	1
2-2	Z0614X22	PIN	1	32	0442325	SPACER	1
3	0442311	THROTTLE VALVE PIN	1	33	0442326	HAMMER WHEEL	1
4	Z0115/8D	THROTTLE VALVE	1	35	0442328	HAMMER	1
5	0132190	THROTTLE SPRING	1	36	0445029	WHEEL RECEIVER	1
6	Z040P20	O-RING	1	37	0442382	IMPACT HOUSING C.P.	1
7	0132919A	INLET BUSHING	1	37-4	Z040P42	O-RING	1
8	Z0665X14A	BOLT	4	38	0442330A	SQ.DR.ANVIL	1
9	0446017	REGULATOR VALVE	1	40	0442340	REAR RUBBER PROTECTOR	1
9-1	Z040P14	O-RING	1	40-1	Z0804X12	TAPPING SCREW	2
10	0442314	REGULATOR KNOB	1	41	Z0668X25A	BOLT	4
11	Z0563X22	PIN	1	42	Z0968X1	WASHER	4
12-1	Z041S26	O-RING	1	43	Z0668X45A	BOLT	4
15	0114193	KNOCK SPRING	1	44	Z0918	LOCK NUT	4
16	Z0104D	STEEL BALL	1	45	0442387	DEAD HANDLE C.P.	1
18	0132916	REVERSE VALVE	1	46	0442390B	FRONT RUBBER PROTECTOR	1
18-1	Z041S18	O-RING	1	47-1	Z0666X20A	BOLT	4
19	Z03121	RETAINER	1	50	Z040P26	O-RING	1
20	0132915	REVERSE LEVER	1	57	0442327B	CAM	1
21	Z0674X12	SCREW	1	58	Z0578X10	ROLLER	2
22	0442381H	MOTOR CASE C.P.	1	56	Z0846X8	SCREW	1
22-1	0132991	KNOCK SPRING	1	56-1	Z040P6	O-RING	1
22-2	Z0106D	STEEL BALL	1				
23	0442306	MOTOR GASKET	1				
24	0442307	IMPACT HOUSING GASKET	1				
25	Z0016205	REAR BEARING	1				
26	0442324A	REAR END PLATE	1				
26-1	Z0564X10	SPRING PIN	1				
27	0442321	ROTOR	1				
28	0442322	ROTOR BLADE	6				
29	0442320	CYLINDER	1				