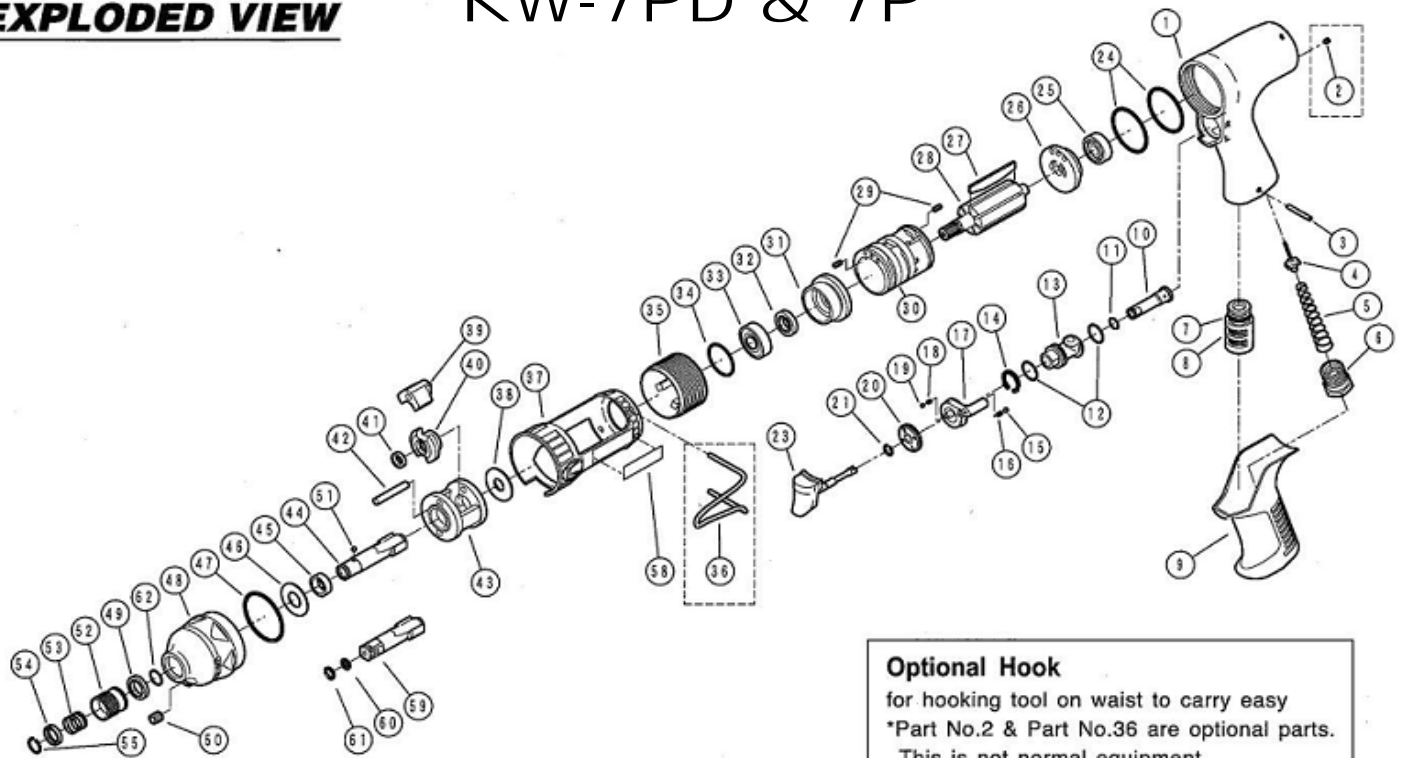


**EXPLODED VIEW**

**KW-7PD & 7P**



**Optional Hook**  
 for hooking tool on waist to carry easy  
 \*Part No.2 & Part No.36 are optional parts.  
 This is not normal equipment.

**PARTS LIST**

REF.NO. on DRAW	PART NUMBER	PART NAME	Q'TY.	REF.NO. on DRAW	PART NUMBER	PART NAME	Q'TY.
1	0207081	Motor Case C.P.	1	32	Z01810194	Oil Seal	1
2	Z0763X3	Set Screw (Optional)	1	33	Z0016000Z	Ball Bearing	1
3	Z0613X22	Pin	1	34	Z041S26	"O" Ring	1
4	02070131	Throttle Valve	1	35	0207039	Joint	1
5	0207038	Throttle Valve Spring	1	36	0207099	Hook (Optional)	1
6	0207011	Inlet Bushing	1	37	02070041	Protector	1
7	Z040P12	"O" Ring	1	38	0207025	Spacer	1
8	0207040K	Muffler Unit	1	39	0206128	Hammer	2
9	02070011	Grip	1	40	0207027	Cam	1
10	0207017	Regulator Valve	1	41	02070322	Thrust Plate	1
11	Z04307010	"O" Ring	1	42	Z0575X314	Hammer Pin	2
12	Z041S15	"O" Ring	2	43	0206126	Impact Cage	1
13	0207015	Reverse Valve	1	44	0207030DA	"D" Anvil	1
14	Z03017	Stop Ring	1	45	0207031	Cage Bushing	1
15	Z0103D	Steel Ball	1	46	0207032	Thrust Plate	1
16	02070161	Reverse Lever Spring	1	47	Z041S40	"O" Ring	1
17	0207016	Reverse Lever	1	48	0207082A	Clutch Case C.P.	1
18	02070181	"R" Valve Knob Spring	1	49	Z01812183	Oil Seal	1
19	Z01025D	Steel Ball	1	50	Z0751/16D	Plug	1
20	0207018	Regulating Valve Knob	1	51	Z0101/8D	Steel Ball	1
21	02070176	Regulating Valve Ring	1	52	0207043	Ball Stopper	1
23	0207012	Throttle Lever	1	53	02054302	Ball Stopper Spring	1
24	Z041S36	"O" Ring	2	54	02054303	Spring Stopper	1
25	Z001608	Ball Bearing	1	55	02054304	Retainer Ring	1
26	0207024	Rear End Plate	1	58	02070951	Logo Sticker	2
27	0207022A	Rotor Blade	7	59	02070842	3/8" Sq. Dr. Anvil C.P.	1
28	0207021	Rotor	1	60	Z040P5	"O" Ring	1
29	Z0563X6	Pin	2	61	0206132	Retainer Ring	1
30	0207020A	Cylinder	1	62	Z041S12	"O" Ring	1
31	0207023A	Front End Plate	1				