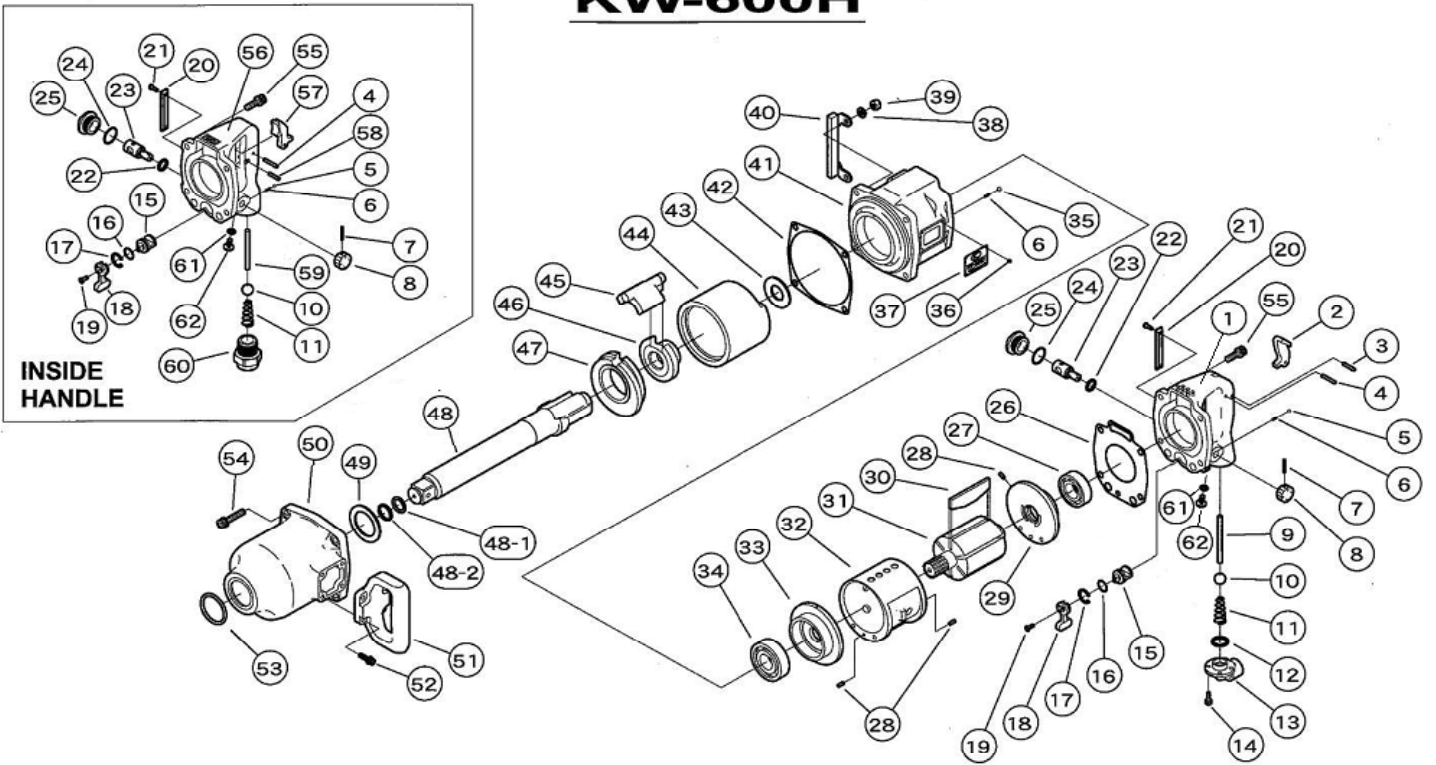


**EXPLODED VIEW**

**KW-600H**



**PARTS LIST**

REF.NO. on DRAW	PART NUMBER	PART NAME	Q'TY.	REF.NO. on DRAW	PART NUMBER	PART NAME	Q'TY.
1	0442380A1	Handle C.P.	1	34	Z0016305	Ball Bearing	1
2	0132117D	Throttle Lever	1	35	Z0106D	Steel Ball	1
3	Z0614X22	Pin	1	36	Z0850X3	Rivet	4
4	Z0614X26	Pin	1	37	0446095	Name Plate	1
5	Z0104D	Steel Ball	1	38	Z0968X1	Washer	4
6	0114193	Spring	2	39	Z0918	Lock Nut	4
7	Z0563X22	Spring Pin	1	40	0446004	Front Protector	1
8	0442314	Regulateing Valve Knob	1	41	0446081	Motor Case C.P.	1
9	0442311	Throttle Valve Pin	1	42	0442307	Impact Housing Gasket	1
10	Z0115/8D	Throttle Valve Ball	1	43	0442325	Spacer	1
11	0132190	Throttle Valve Spring	1	44	0446026	Hammer Wheel	1
12	Z040P20	"O" Ring	1	45	0446028	Hammer	1
13	0132919A	Inlet Bushing	1	46	0446027	Cam	1
14	Z0665X14A	Bolt	4	47	0446029	Wheel Receiver	1
15	0132916	Reversing Valve	1	48	04460842	Anvil C.P.	1
16	Z041S18	"O" Ring	1	48-1	Z04318030	"O" Ring	1
17	Z03121	Retainer Ring	1	48-2	0538034A	Retainer Ring	1
18	0132915	Reversing Lever	1	49	0442334	Thrust Plate	1
19	Z0674X12	Screw	1	50	0446082	Impact Housing C.P.	1
20	0442340	Rear Protector	1	51	0132104	"D" Handle	1
21	Z0804X12	Tapping Screw	2	52	Z0666X20A	Bolt	4
22	Z040P14	"O" Ring	1	53	Z040P42	"O" Ring	1
23	0446017	Regulating Valve	1	54	Z0668X45A	Bolt	4
24	Z041S26	"O" Ring	1	55	Z0668X25A	Bolt	4
25	04460391	Pllug	1	61	Z040P8	"O" Ring	1
26	0442306	Motor Case Gasket	1	62	Z0848X10	Screw	1
27	Z0016205	Ball Bearing	1	<b>PARTS FOR INSIDE TRIGGER HANDLE</b>			
28	Z0564X10	Spring Pin	3	56	0442380IF	Handle C.P. Front Exhaust	1
29	0442324A	Rear End Plate	1	57	0345417	Throttle Lever	1
30	0446022	Rotor Blade	6	58	Z0614X20	Pin	1
31	0446021A	Rotor	1	59	0132911I	Throttle Valve Pin	1
32	0446020	Cylinder	1	60	0442319I	Inlet Bushing	1
33	0442323A	Front End Plate	1				