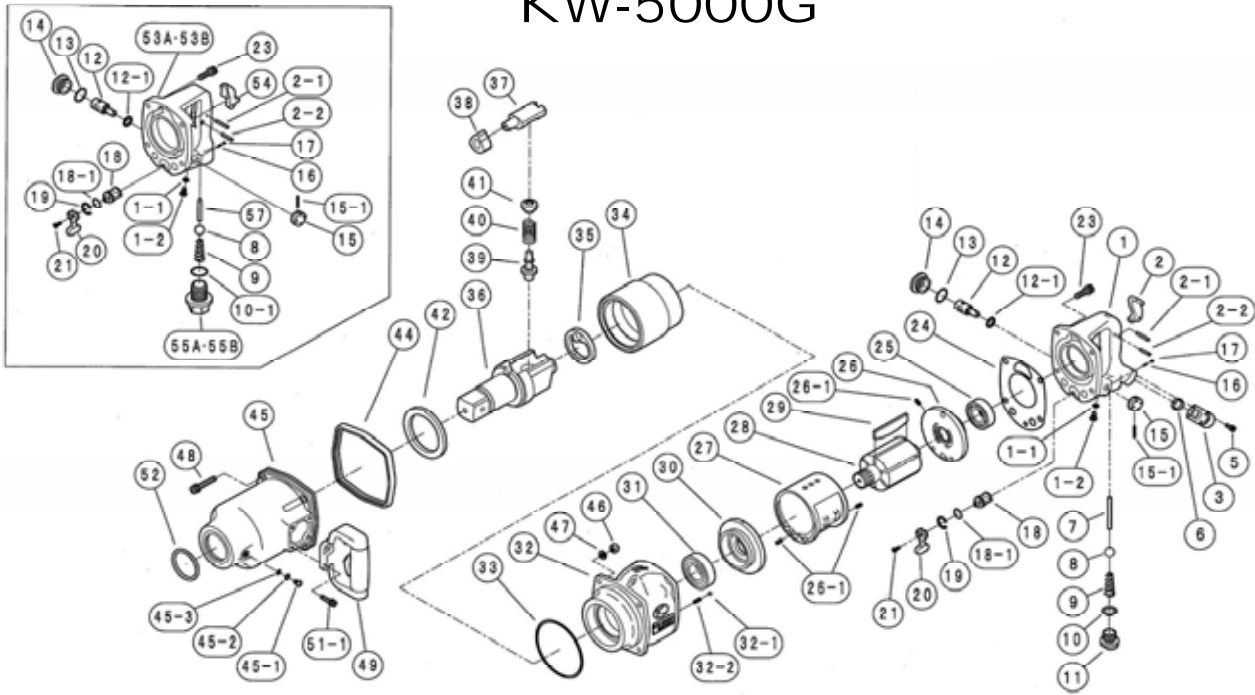


# KW-5000G



## PARTS LIST

REF.NO. on DRAW	PART NUMBER	PART NAME	Q'TY.	REF.NO. on DRAW	PART NUMBER	PART NAME	Q'TY.
1	0142080B1	Handle C.P.	1	32	0550181B	Motor Case C.P.(Rear Exhaust)	1
2	0132117D	Throttle Lever	1	32	0550181BI	Motor Case C.P.(Front Exhaust)	1
2-1	Z0614X28	Pin	1	32-1	Z0106D	Steel Ball	1
2-2	Z0614X22	Pin	1	32-2	0132991	Knok Spring	1
3	0345290	Inlet Bushing	1	33	Z041S110	"O"Ring	1
5	Z0665X12A	Bolt	4	34	0550026	Hammer Wheel	1
6	Z040P16	"O"Ring	1	35	0550050	Reatainer	1
7	0142013B	Throttle Valve Pin	1	36	0550030A	Anvil	1
8	Z0115/8D	Throttle Valve	1	37	0550028	Anvil Piece	1
9	0132190	Throttle Valve Spring	1	38	0550027	Cam	1
10	Z040P20	"O"Ring	1	39	0550051B	Planger A	1
11	0132150	Plug	1	40	0550053	Spring	1
12	0446017	Regulator Valve	1	41	0550052B	Planger B	1
12-1	Z040P14	"O"Ring	1	42	0550029	Bushing	1
13	Z041S26	"O"Ring	1	44	0142071	Rubber Protector	1
14	04460391	Plug	1	45	0550182	Impact Housing C.P.	1
15	0442314	Regulating Valve Knob	1	45-1	Z0886X8	Grease Screw	1
15-1	Z0563X22	Pin	1	45-2	Z0996	Toothed Lock Washer	1
16	0114193	Knock Spring	1	45-3	Z040P6	"O"Ring	1
17	Z0104D	Steel Ball	1	46	Z0918	Lock Nut	4
18	0142015B	Reverse Valve	1	47	Z0968X1	Washer	4
18-1	Z041S18	"O"Ring	1	48	Z0668X45A	Bolt	4
19	Z03121	Retainer	1	49	0442387	Dead Handle C.P.	1
20	0132915	Reverse Lever	1	51	Z0666X20A	Bolt	4
21	Z0674X12	Screw	1	52	Z040P50	"O"Ring	1
23	Z0668X25A	Bolt	4	1-1	Z0846X10	Screw	1
24	0142006B	Motor Housing Gasket	1	1-2	Z040P6	"O"Ring	1
25	Z0016205	Ball Bearing	1	<b>PARTS FOR INSIDE TRIGGER HANDLE</b>			
26	0132124	Rear End Plate	1	10-1	Z040P28J	"O"Ring	1
26-1	Z0565X10	Spring Pin	3	53A	0550180bns	Handle C.P.(NPT)	1
27	0140509	Cylinder	1	53B	0550180bts	Handle C.P.(PT)	1
28	0550021	Rotor	1	54	0345417	Throttle Lever	1
29	0550022	Rotor Blade	6	55A	0132919nis	Inlet Bushing(NPT)	1
30	0550023	Front End Plate	1	55B	0132919is	Inlet Bushing(PT)	1
31	Z0016206Z	Ball Bearing	1	57	0550113bt	Throttle Lever	1