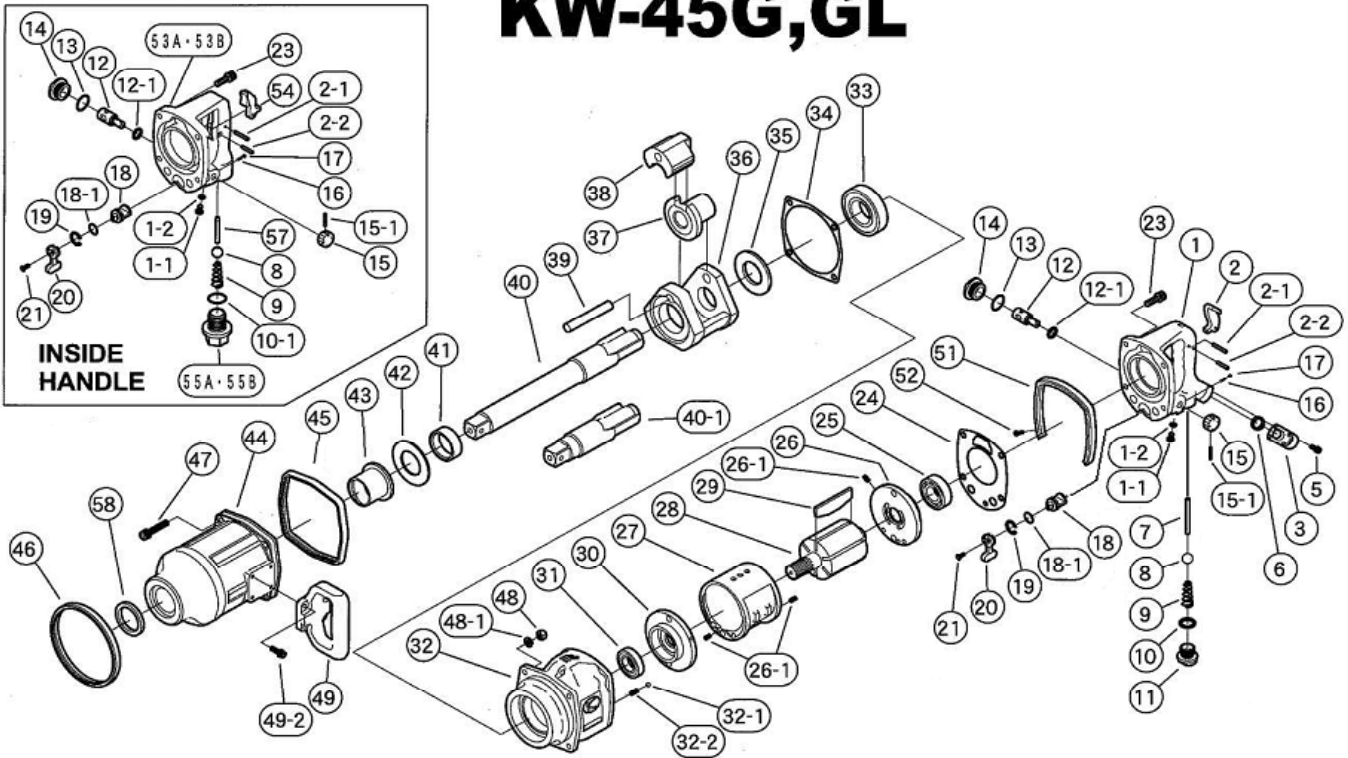


EXPLODED VIEW

KW-45G, GL



PARTS LIST

| REF.NO. on DRAW | PART NUMBER | PART NAME | Q'TY. | REF.NO. on DRAW | PART NUMBER | PART NAME | Q'TY. |
|--------------------|-------------|-----------------------|-------|----------------------------------------|-------------|------------------------|-------|
| 1 | 0142080B1 | Handle C.P. | 1 | 32-1 | Z0106D | Steel Ball | 1 |
| 2 | 0132117D | Throttle Lever | 1 | 32-2 | 0132991 | Knock Spring | 1 |
| 2-1 | Z0614X28 | Pin | 1 | 33 | Z0016208Z | Ball Bearing | 1 |
| 2-2 | Z0614X22 | Pin | 1 | 34 | 0345207 | Impact Gasket | 1 |
| 3 | 0345290 | Inlet Bushing | 1 | 35 | 0142025 | Spacer | 1 |
| 5 | Z0665X12A | Bolt | 4 | 36 | 0142026B | Impact Cage | 1 |
| 6 | Z040P16 | "O"Ring | 1 | 37 | 0142027B | Cam | 1 |
| 7 | 0142013B | Throttle Valve Pin | 1 | 38 | 0142028 | Hammer | 1 |
| 8 | Z0115/8D | Throttle Valve Ball | 1 | 39 | 0142019 | Hammer Pin | 1 |
| 9 | 0132190 | Throttle Spring | 1 | 40 | 0142030 | Anvil GL | 1 |
| 10 | Z040P20 | "O"Ring | 1 | 40-1 | 0142030G | Anvil G | 1 |
| 11 | 0132150 | Plug | 1 | 41 | 0142031 | Cage Bushing | 1 |
| 12 | 0446017 | Regulating Valve | 1 | 42 | 0142034 | Thrust Plate | 1 |
| 12-1 | Z040P14 | "O"Ring | 1 | 43 | 0132132 | Spindle Bushing | 1 |
| 13 | Z041S26 | "O"Ring | 1 | 44 | 0142082B | Impact Housing C.P. | 1 |
| 14 | 04460391 | Plug | 1 | 45 | 0142071 | Rear Rubber Protector | 1 |
| 15 | 0442314 | Regulating Valve Knob | 1 | 46 | 0345270 | Front Rubber Protector | 1 |
| 15-1 | Z0563X22 | Pin | 1 | 47 | Z0668X45A | Bolt | 4 |
| 16 | 0114193 | Knock Spring | 1 | 48 | Z0918 | Lock Nut | 4 |
| 17 | Z0104D | Steel Ball | 1 | 48-1 | Z0968X1 | Washer | 4 |
| 18 | 0142015B | Reverse Valve | 1 | 49 | 0132104 | "D" Hndle | 1 |
| 18-1 | Z041S18 | "O"Ring | 1 | 49-2 | Z0666X20A | Bolt | 4 |
| 19 | Z03121 | Retainer Ring | 1 | 51 | 0142041BH | Rubber Protector | 1 |
| 20 | 0132915 | Reverse Lever | 1 | 52 | Z0804X12 | Screw | 2 |
| 21 | Z0674X12 | Screw | 1 | 58 | Z01742556 | Oil Seal | 1 |
| 23 | Z0668X25A | Bolt | 4 | 1-1 | Z0846X10 | Screw | 1 |
| 24 | 0142006B | Motor Gasket | 1 | 1-2 | Z040P6 | "O"Ring | 1 |
| 25 | Z0016205 | Ball Bearing | 1 | PARTS FOR INSIDE TRIGGER HANDLE | | | |
| 26-1 | 0132124 | Rear End Plate | 1 | 10-1 | Z040P28J | "O"Ring | 1 |
| 27 | 0140509 | Cylinder | 1 | 53A | 0550180BNS | Handle C.P.(NPT) | 1 |
| 28 | 01420211 | Rotor | 1 | 53B | 0550180BTS | Handle C.P.(PT) | 1 |
| 29 | 0140512 | Rotor Blade | 6 | 54 | 0345417 | Throttle Lever | 1 |
| 30 | 0132124 | Front End Plate | 1 | 55A | 0132919NIS | Inlet Bushing(NPT) | 1 |
| 31 | Z0016205Z | Ball Bearing | 1 | 55B | 0132919IS | Inlet Bushing(PT) | 1 |
| 32 | 0142081BH | Motor Case C.P. | 1 | 57 | 0550113BT | Throttle Valve Pin | 1 |