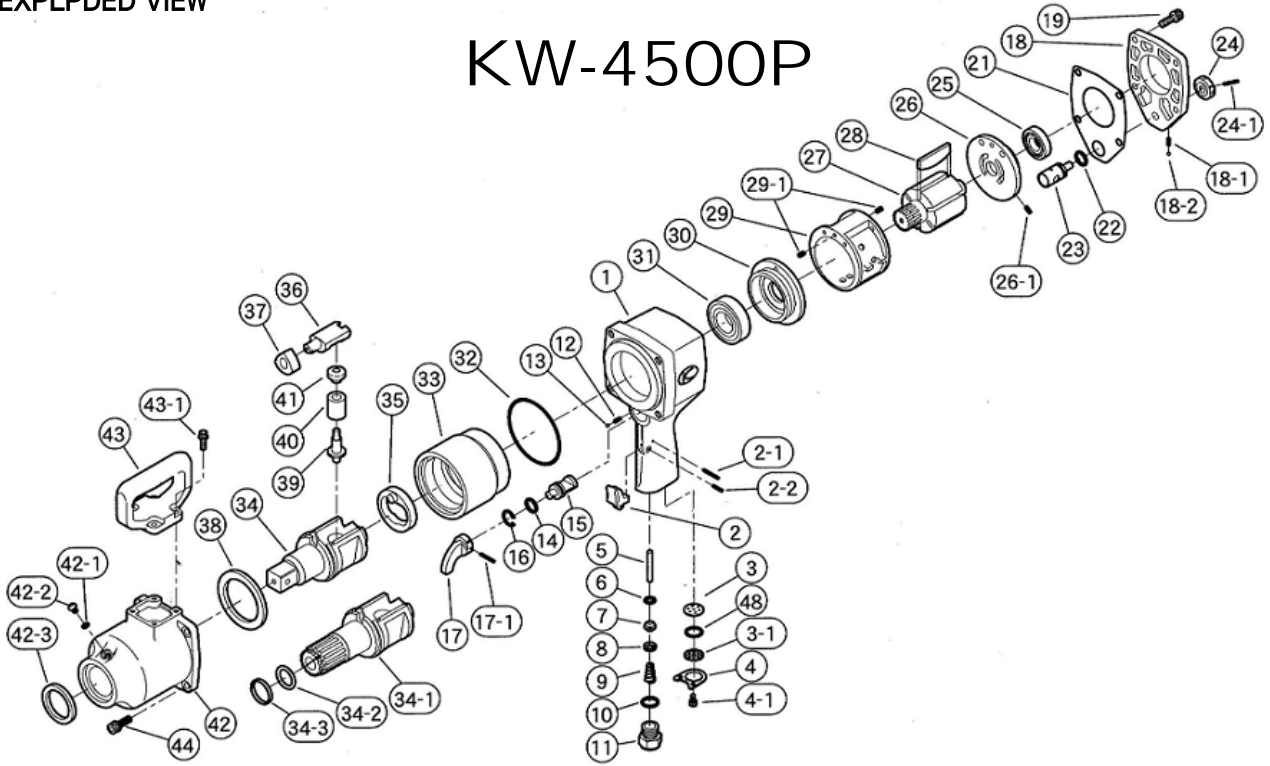


EXPLDED VIEW

KW-4500P



PART LIST

REF. NO. on DRAW	PART NUMBER	PART NAME	Q'TY.	REF. NO. on DRAW	PART NUMBER	PART NAME	Q'TY.
1	0545081	Motor Case C.P.	1	25	Z0016204	Ball Bearing	1
2	0132306	Throttle Lever	1	26	0132924	Rear End Plate	1
2-1	Z0563X26	Spring Pin	1	26-1	Z0564X10	Spring Pin	1
2-2	Z0563X16	Spring Pin	1	27	0545021	Rotor	1
3	0538055A	Muffler	1	28	0545022	Rotor Blade	6
3-1	0538056	Muffler Stopper	1	29	0439020	Cylinder	1
4	0545009	Stopper	1	29-1	Z0565X8	Spring Pin	2
4-1	Z0665X10A	Bolt	2	30	0545023	Front End Plate	1
5	0545013	Throttle Valve Pin	1	31	Z0016206Z	Ball Bearing	1
6	04383111	Plate	1	32	Z041S95	"O"Ring	1
7	0438311	Throttle Valve	1	33	0545026	Hammer Wheel	1
8	0438341	"O"Ring Cover	1	34	0545030A	Anvil G	1
9	0438342	Throttle Valve Spring	1	34-1	05453841A	#5 Anvil GS C.P.	1
10	Z040P18	"O"Ring	1	34-2	Z040P26	"O"Ring	1
11	0438343	Inlet Bushing	1	34-3	0132202	Retainer Ring	1
12	0114192	Knock Spring	1	35	0545050	Retainer	1
13	Z0104D	Steel Ball	1	36	0545028	Anvil Piece	1
14	Z040P16	"O"Ring	1	37	0545027	Cam	1
15	0438315	Reverse Valve	1	38	0545029	Bushing	1
16	Z03121	Retainer	1	39	0545051B	Plunger A	1
17	0438316	Reverse Lever	1	40	0545053A	Spring	1
17-1	Z0563X24	Spring Pin	1	41	0545052B	Plunger B	1
18 x	0545088	Case Cover C.P.	1	42	0545082	Impact Housing C.P.	1
18-1	x 0114192	Knock Spring	1	42-1	Z040P6	"O"Ring	1
18-2	x Z0104D	Steel Ball	1	42-2	Z0886X8	Screw	1
19	Z0668X25A	Bolt	4	42-3	Z01742556	Oil Seal	1
21	0545006	Motor Housing Gasket	1	43	0132104	Dead Handle	1
22	Z040P16	"O"Ring	1	43-1	Z0666X20A	Bolt	4
23	0545017	Regulating Valve	1	44	Z0668X25A	Bolt	4
24	0438318	Regulating Valve Knob	1	48	Z040P20	"O"Ring	1
24-1	Z0563X28	Spring pin	1				

KUKEN CO., LTD.

P.O. BOX 20 FUJIEDERA, OSAKA 583-0871 JAPAN
 3-6-15, NONOUE, HABIKINO-SHI, OSAKA JAPAN
 TEL : 81-72-953-0601
 FAX : 81-72-953-0605
<http://www.kuken.co.jp>

Product Improvement is continuing. Designs and Specifications are subject to change without notice or obligation

CAT.NO'07.12