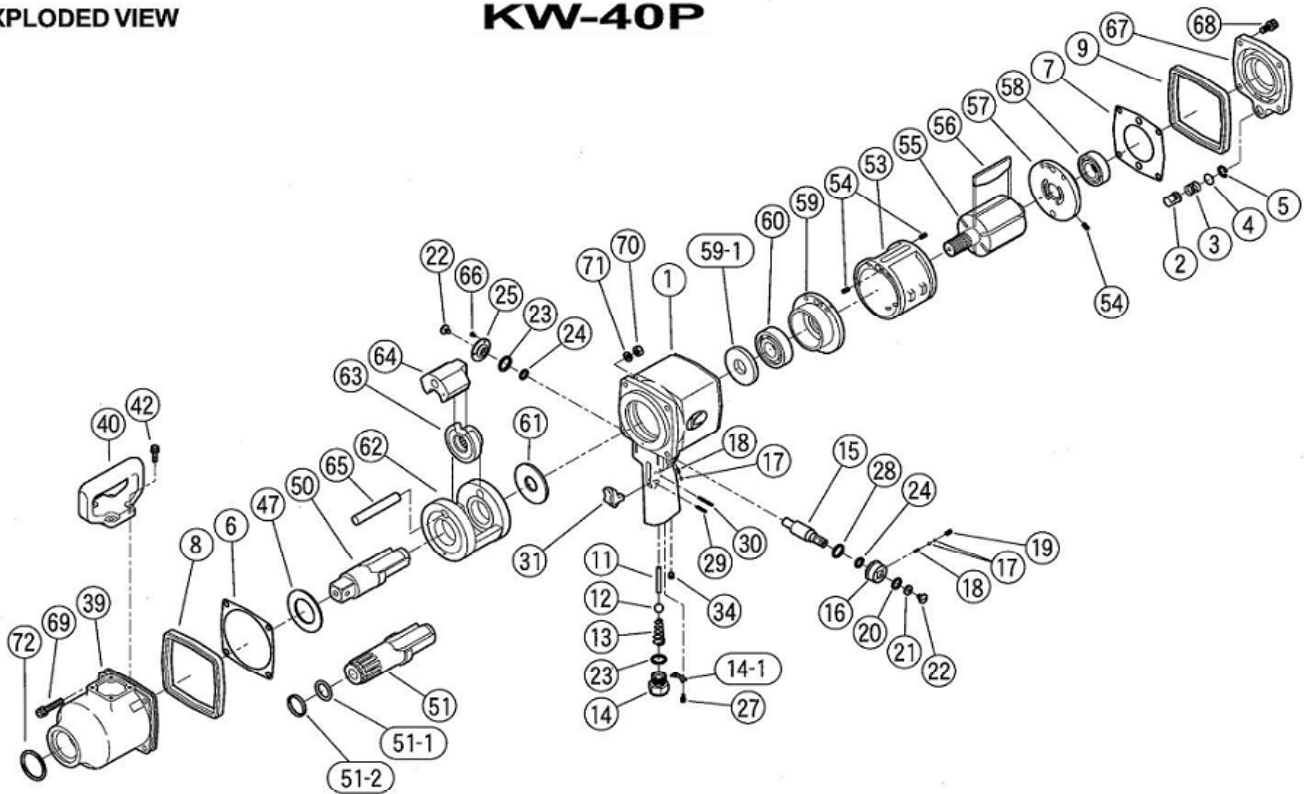


EXPLODED VIEW

KW-40P



PARTS LIST

REF.NO. on DRAW	PART NUMBER	PART NAME	Q'TY.	REF.NO. on DRAW	PART NUMBER	PART NAME	Q'TY.
1	0140181	Motor Case C.P.	1	39	0132382B	Impact Housing C.P.	1
2	0132108	Exhaust Cover	1	40	0132104	"D" Handle	1
3	0132390	Exhaust Spring	1	42	Z0666X20A	Bolt	4
4	0132109	Exhaust Spring Support	1	47	0132133	Thrust Plate	1
5	Z03117	Retainer Ring	1	50	0132330	Anvil	1
6	0132107	Impact Housing Gasket	1	51	01324841	Spline Anvil C.P.	1
7	0132307	Motor Case Gasket	1	51-1	Z040P26	"O" Ring	1
8	0132571	Front Rubber Protector	1	51-2	0132202	Retainer Ring	1
9	0132371	Rear Rubber Protector	1	53	0140509	Cylinder	1
11	0132313	Throttle Valve Pin	1	54	Z0565X10	Pin	3
12	Z0111/2D	Throttle Valve Ball	1	55	01420211	Rotor	1
13	0132190	Throttle Valve Spring	1	56	0140512	Rotor Blade	6
14	0132311	Inlet Bushing	1	57	0132124	Rear End Plate	1
14-1	0132309	Inlet Bushing Stopper	1	58	Z0016205	Ball Bearing	1
15	0132113F	Reversing Valve	1	59	0132123	Front End Plate	1
16	0132114	Reversing Valve Knob	1	59-1	0132135	Shock Absorber	1
17	Z0104D	Steel Ball	3	60	Z0016305	Ball Bearing	1
18	0114193	Knock Spring	2	61	0132125	Spacer	1
19	Z0835X6	Stop Screw	1	62	0132126A	Impact Cage	1
20	Z040P14	"O" Ring	1	63	0132527A	Cam	1
21	0132134	Valve Seat	1	64	0132128	Hammer	1
22	0132391	Valve Stop Screw	2	65	0132129	Hammer Pin	1
23	Z040P18	"O" Ring	2	66	Z0823X6	Screw	3
24	Z040P12	"O" Ring	2	67	0140188	Case Cover C.P.	1
25	0132115	Valve Stop	1	68	Z0668X20A	Bolt	4
27	Z0664X8A	Bolt	2	69	Z0668X38A	Bolt	4
28	Z040P20	"O" Ring	1	70	Z0918	Lock Nut	4
29	Z0563X18	Pin	1	71	Z0968X1	Washer	4
30	Z0563X28	Pin	1	72	Z040P42	"O" Ring	1
31	0132306	Throttle Lever	1				
34	Z0751/4	Screw	1				