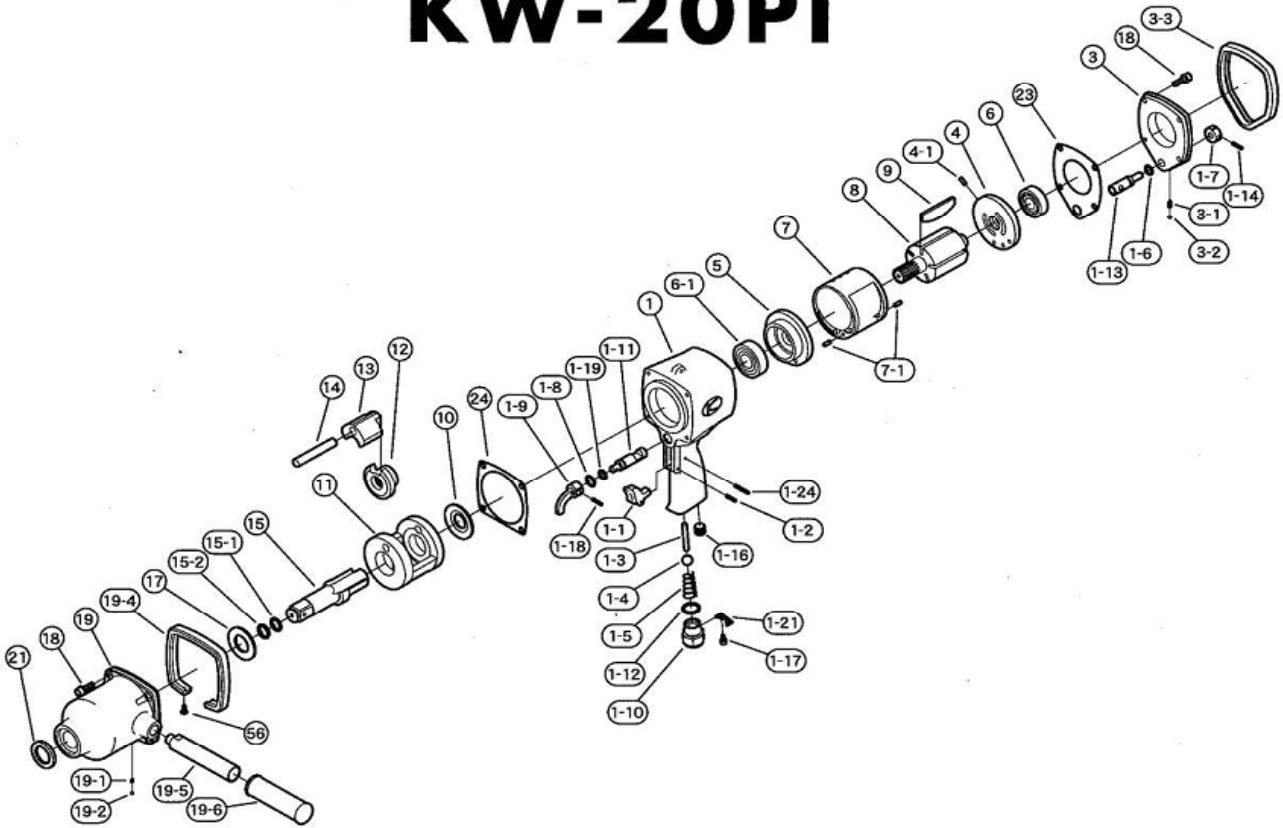


KW-20PI



PARTS LIST

REF.NO. on DRAW	PART NUMBER	PART NAME	Q'TY.	REF.NO. on DRAW	PART NUMBER	PART NAME	Q'TY.
1+	0120681	Motor Case C.P.	1	6	Z0016203	Ball Bearing	1
1-1	0132306	Throttle Lever	1	6-1	Z0016204Z	Ball Bearing	1
1-2	Z0563X16	Pin	1	7	0120304	Cylinder	1
1-3	0120613	Throttle Valve Pin	1	7-1	Z0564X10	Pin	2
1-4	Z0111/2D	Throttle Valve Ball	1	8	0120605A	Rotor	1
1-5	0132190	Throttle Spring	1	9	0538022	Rotor Blade	5
1-6	Z040P10	"O"Ring	1	10	0120609	Spacer	1
1-7	0120210	Regulator Knob	1	11	0120610K	Impact Cage	1
1-8	Z03015	Retainer Ring	1	12	0120627	Cam	1
1-9	0114116	Reverse Lever	1	13	0120628	Hammer	1
1-10	0132311	Inlet Bushing	1	14	0120629	Hammer Pin	1
1-11	0120415	Reverse Valve	1	15+	01206843	Anvil C.P.	1
1-12	Z040P18	"O"Ring	1	15+	01206844	Anvil C.P. 2" Long	1
1-13	0120417	Regulator Valve	1	15+	01206845	Anvil C.P. 6" Long	1
1-14	Z0563X16	Pin	1	15-1	Z040P14	"O"Ring	1
1-16	Z0751/4	Oil Screw	1	15-2	0120128	Retainer Ring	1
1-17	Z0664X8A	Bolt	2	17	0120126	Thrust Plate	1
1-18	Z0563X16	Pin	1	18	Z0666X20A	Cap Screw	8
1-19	Z040P10	"O"Ring	1	19+	0120682	Impact Housing C.P.	1
1-21	0132309	Inlet Bushing Spacer	1	19-1	0114194	Knock Spring	1
1-24	Z0563X24	Pin	1	19-2	Z0104D	Steel Ball	1
3+	0120688	Backhead Cover	1	19-4	0120670	Front Rubber Protector	1
3-1	0114192	Knock Spring	1	19-5	0120292	Dead Handle	1
3-2	Z0104D	Steel Ball	1	19-6	Z1075627	Handle Cover	1
3-3	0120671	Rear Rubber Protector	1	21	Z01625385	Oil Seal	1
4	0120302	Rear End Plate	1	23	0120416	Motor Housing Gasket	1
4-1	Z0564X10	Pin	1	24	0120407	Impact Housing Gasket	1
5	0120303	Front End Plate	1	56	Z0804X12	Tapping Screw	4