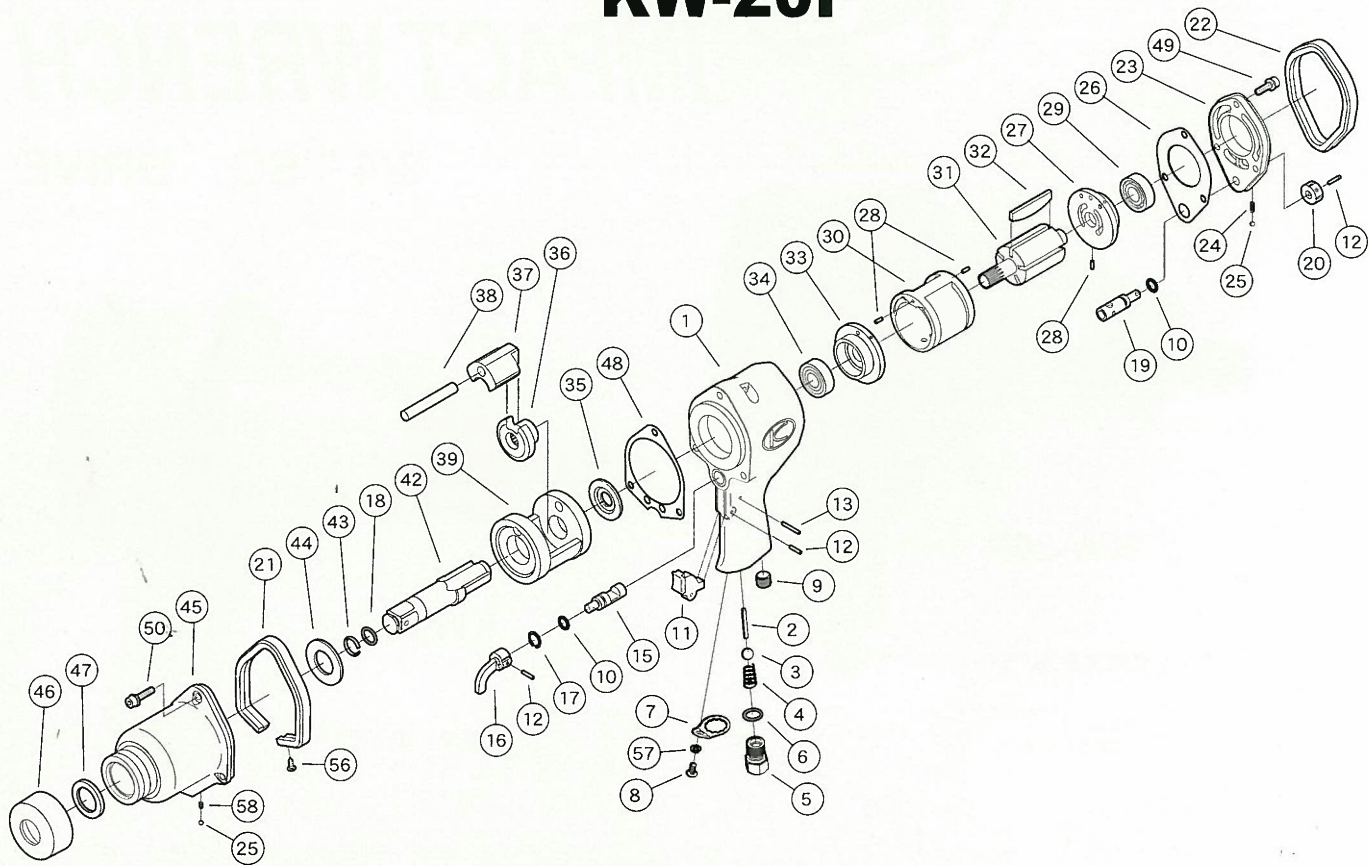


EXPLODED VIEW

KW-20P



REPAIR PART LIST

REF. NO. ON DRAW.	PART NUMBER	PART NAME	Q'TY.	REF. NO. ON DRAW.	PART NUMBER	PART NAME	Q'TY.
1	0120281	Motor Case C.P.	1	28	Z0563×8	Spring Pin	3
2	0120213	Throttle Valve Pin	1	29	Z0016202	Ball Bearing	1
3	Z0117/16D	Throttle Valve	1	30	0120115	Cylinder	1
4	0114190	Throttle Valve Spring	1	31	0120216	Rotor	1
5	0114111	Inlet Bushing	1	32	0120117	Rotor Blade	5
6	Z040P14	"O" Ring	1	33	0120113A	End Plate	1
7	0114109	Inlet Bushing Spacer	1	34	Z0016202Z	Ball Bearing	1
8	Z0815×10	Screw	1	35	0120119	Spacer	1
9	Z0751/4	Plug	1	36	0120121A	Cam	1
10	Z040P10	"O" Ring	2	37	0120122A	Hammer	1
11	0114112	Throttle Lever	1	38	0120123	Hammer Pin	1
12	Z0563×16	Pin	3	39	0120120	Impact Cage	1
13	Z0563×22	Pin	1	42	01202843	Anvil C. P.	1
15	0114115	Reverse Valve	1	42	01202844	2" Anvil C. P.	1
16	0114116	Reverse Lever	1	42	01202845	6" Anvil C. P.	1
17	Z03015	Retainer Ring	1	43	0120128	Retainer Ring	1
18	Z040P14	"O" Ring	1	44	0120126	Thrust Plate	1
19	0120209A	Regulator Valve	1	45	0120282A	Clutch Case C.P.	1
20	0120210	Regulator Knob	1	46	0120107	Cover Seal	1
21	0120270	Front Rubber Protector	1	47	Z01625385	Oil Seal	1
22	0120271	Rear Rubber Protector	1	48	0120104	Impact Housing Gasket	1
23	0120288	Back Head Cover C.P.	1	49	Z0666×18A	Bolt	3
24	0114192	Knock Spring	1	50	Z0666×25A	Bolt	3
25	Z0104D	Steel Ball	2	56	Z0804×12	Tapping Screw	2
26	0120205	Motor Housing Gasket	1	57	Z0965×2	Washer	1
27	0120113A	End Plate	1	58	0114194	Knock Spring	1

KŪKEN CO., LTD.

P.O. BOX 20, FUJIIDERA OSAKA 583-0871 JAPAN
 3-6-15, NONOUE, HABIKINO-SHI, OSAKA JAPAN
 TEL : +81-72-953-0601
 FAX : +81-72-953-0605
<http://www.kuken.co.jp/>